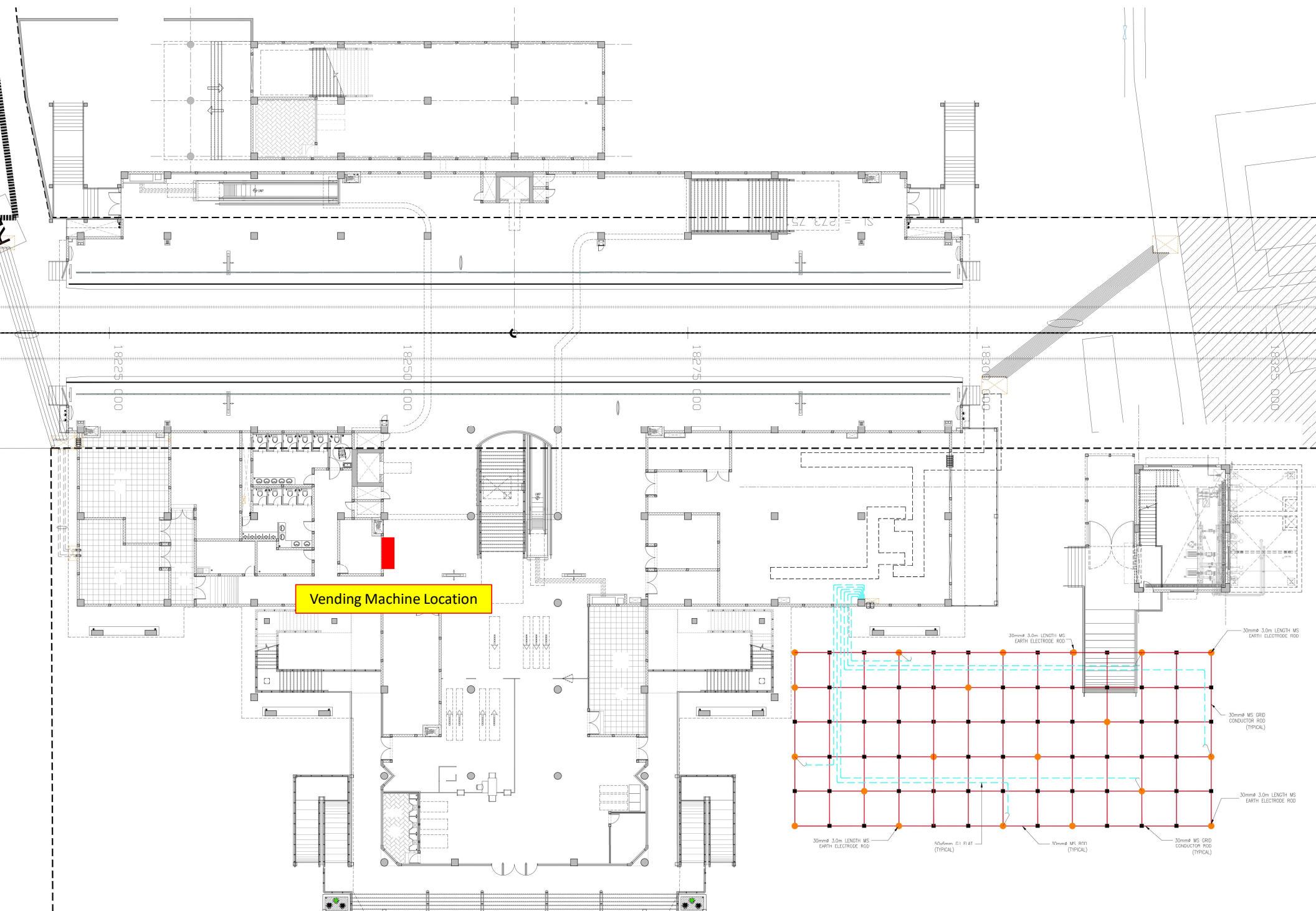
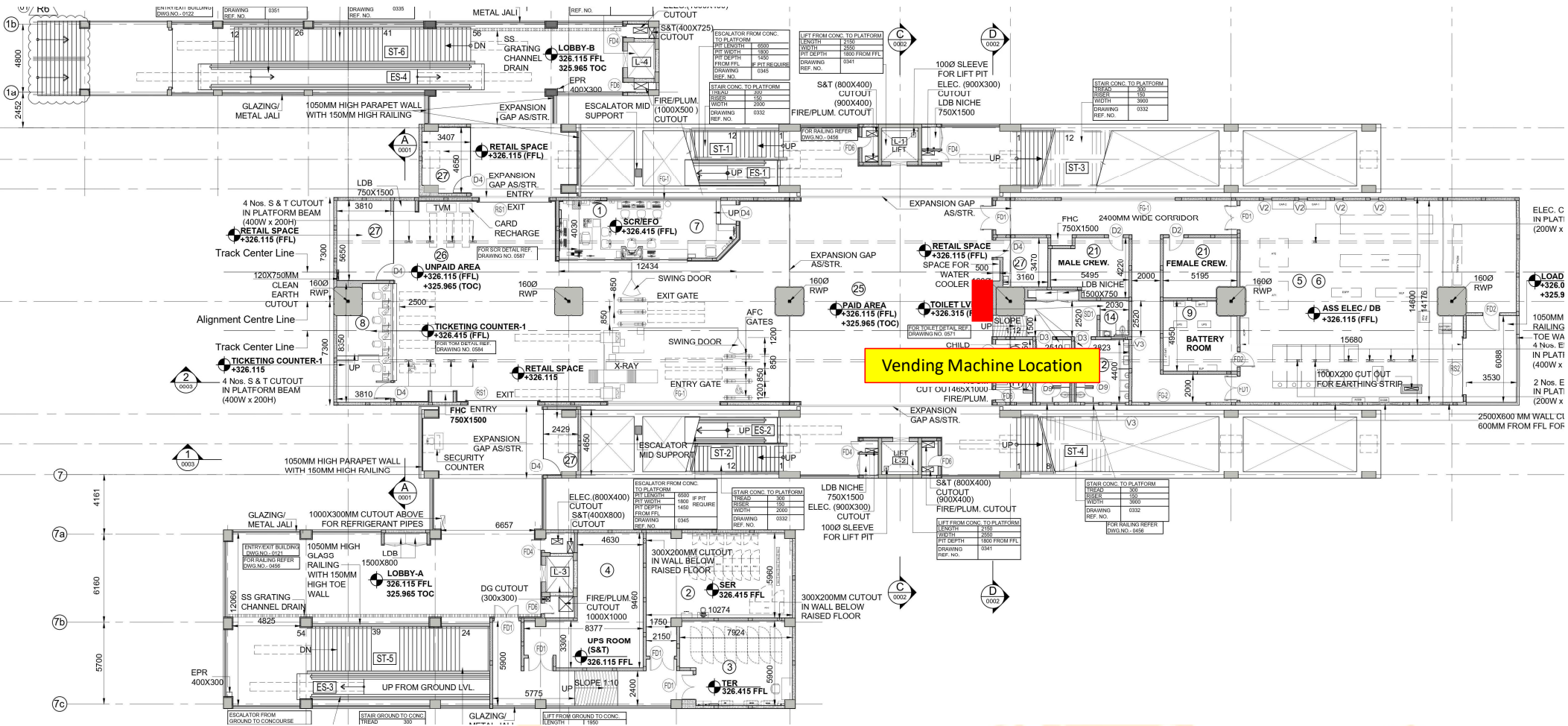


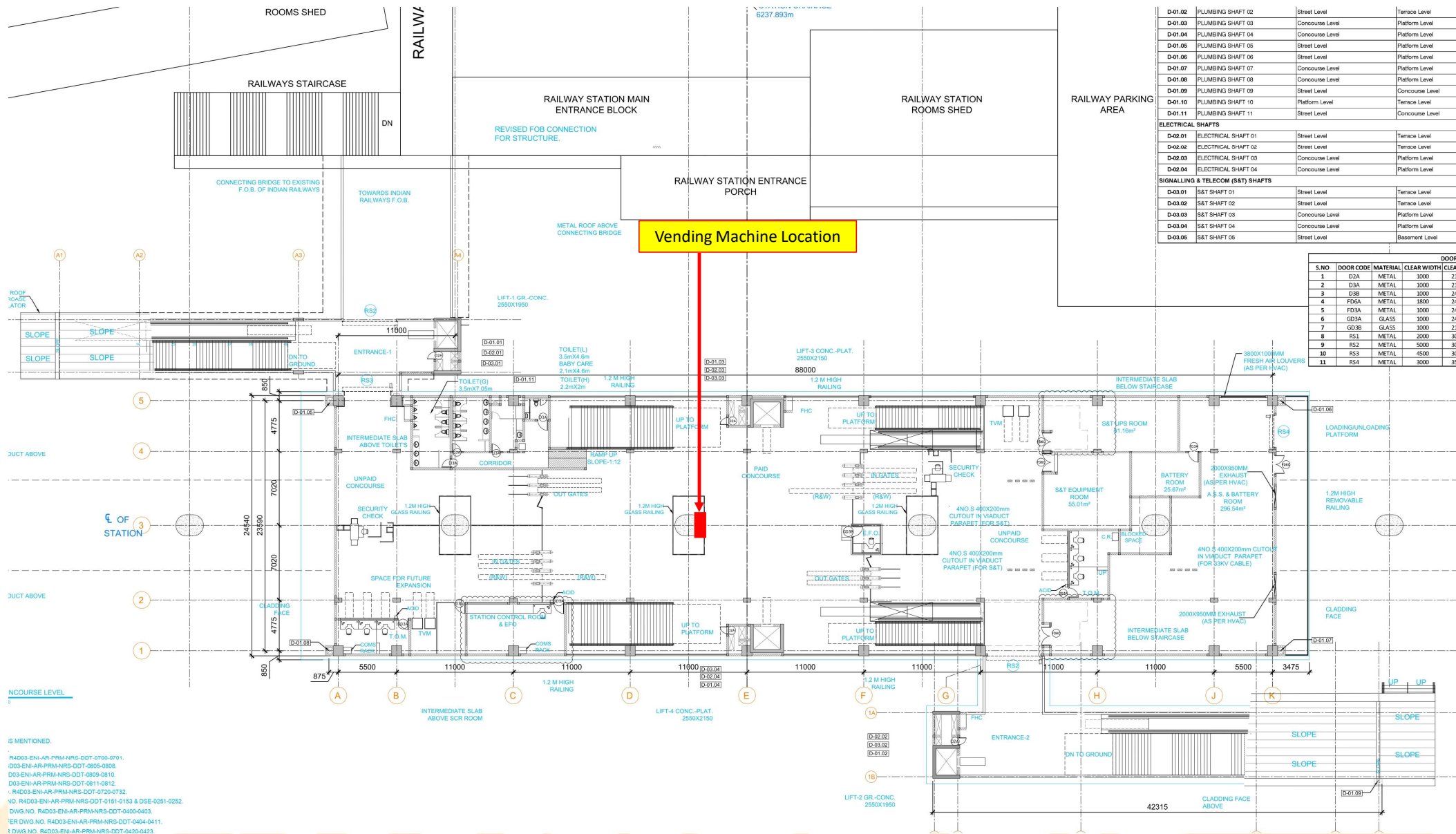
KHAPRI METRO STATION @ ROAD LEVEL



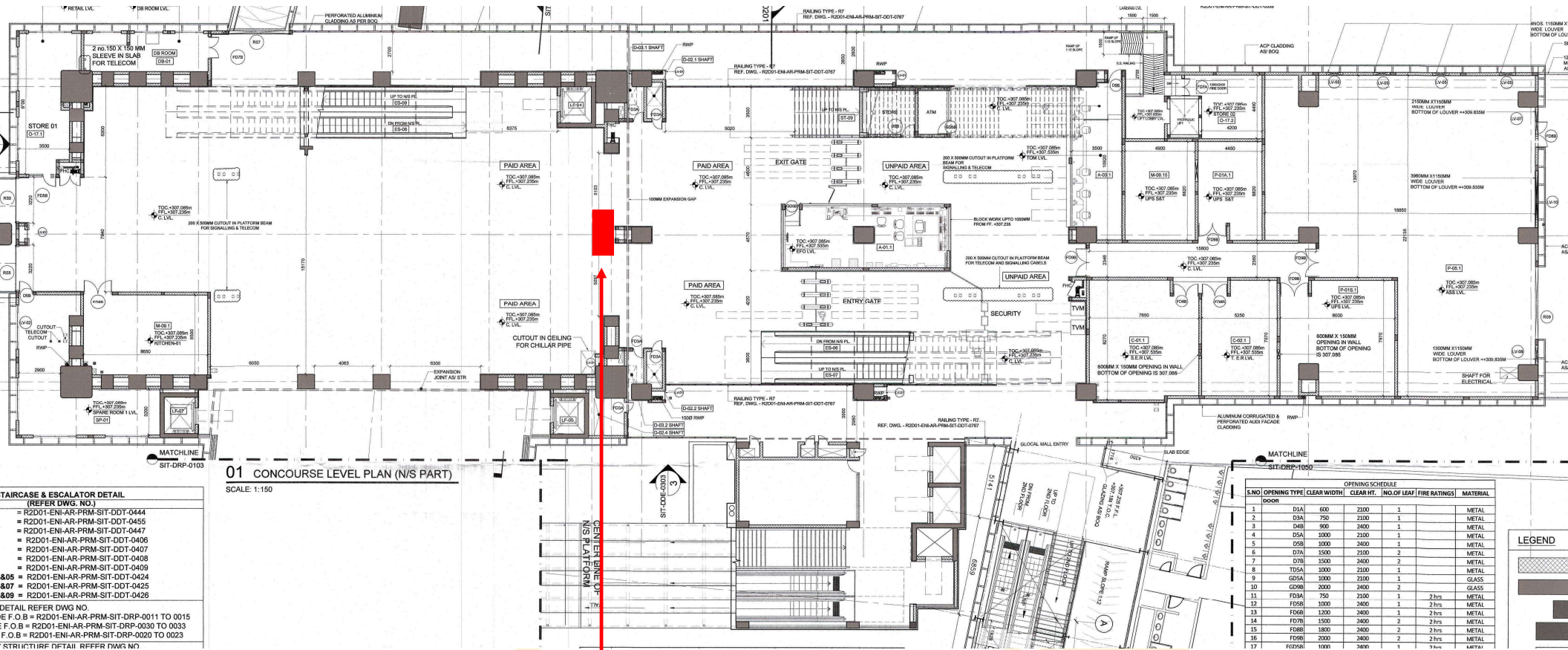
LOKMANYA NAGAR METRO STATION @ CONCOURSE LEVEL



NAGPUR RAILWAY METRO STATION @ CONCOURSE LEVEL



SITABURDI INTERCHANGE METRO STATION @ CONCOURSE (N/S) LEVEL



Vending Machine Location

PRAJAPAT NAGAR METRO STATION @ CONCOURSE LEVEL

MANUFACTURER DRAWING FOR
FIXING DETAIL.
OUT AND OPENING AS PER E

EQUIPMENT ARE TENTATIVELY
SIZE AND LOCATION TO BE
DATE CONTRACTOR
FOR ALL MEP SERVICES.
DETAILS REFER

LIFT DETAILS THESE
REFERRED ALONG WITH
URES SPECIFICATION

IS NOT TO DETAIL. PLEASE
STATION DRAWINGS SHOULD
ENGINEER IF THEY ARE NOT
CT DRAWINGS (GAD
SHOULD BE IMMEDIATELY
WLEDGE OF
CTOR AND DDC.

TYPE	WIDTH	HEIGHT	UNTEL HEIGHT FROM FFL	BELL HEIGHT FROM FFL	LOCATION
RS1	2000	2000	2000	2000	CONCOURSE LVL NORTH ENTRY
RS2	2000	2000	2000	2000	ASS
RS3	2000	2000	2000	2000	PD ENTRY
RS4	2000	2000	2000	2000	VENTILATOR

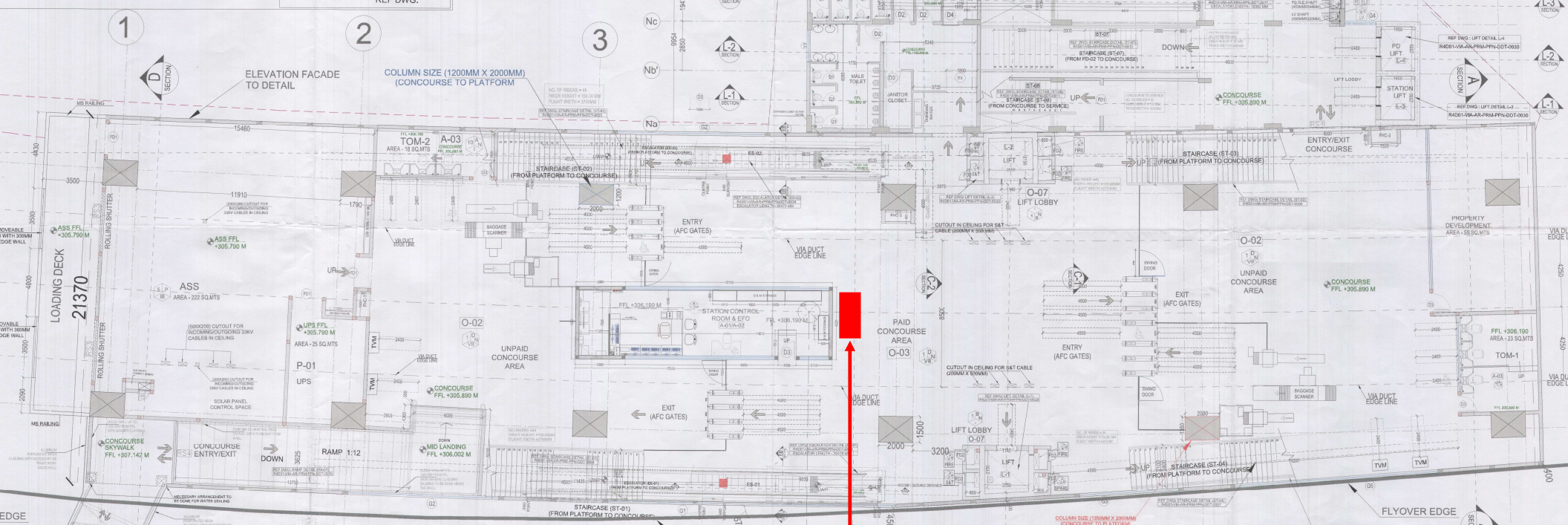
TYPE	WIDTH	HEIGHT	UNTEL HEIGHT FROM FFL	BELL HEIGHT FROM FFL	LOCATION
V1	900	600	2100	1900	TOILETS
V2	1000	600	2100	1900	TOILETS
V3	1250	600	2100	1900	TOILETS
V4	2800	600	2100	1900	TOILETS

TYPE	WIDTH	HEIGHT	UNTEL HEIGHT FROM FFL	BELL HEIGHT FROM FFL	DESCRIPTION
G1	1600	3000	3000	300	
G2	800	3000	3000	300	
G3	575	2600	2600	300	
G4	1540	3000	3000	300	
G5	1140	3000	3000	300	
G6	1800	3000	3000	300	
G7	900	3000	3000	300	
G8	2000	3000	3000	300	
G9	2000	3000	3000	300	

TYPE	WIDTH	HEIGHT	UNTEL HEIGHT FROM FFL	BELL HEIGHT FROM FFL	LOCATION
O-02	700	2100	2100	0	SINGLE SHAFT DOOR
O-04	500	2100	2100	0	SINGLE SHAFT DOOR
O-05	2000	2100	2100	0	CONCOURSE LVL NORTH ENTRY
O-06	2000	2100	2100	0	ASS
O-07	2000	2100	2100	0	PD ENTRY
O-08	2000	2100	2100	0	CONCOURSE LVL NORTH ENTRY
O-09	2000	2100	2100	0	ASS
O-10	2000	2100	2100	0	PD ENTRY
O-11	2000	2100	2100	0	CONCOURSE LVL NORTH ENTRY
O-12	2000	2100	2100	0	ASS
O-13	2000	2100	2100	0	PD ENTRY
O-14	2000	2100	2100	0	CONCOURSE LVL NORTH ENTRY
O-15	2000	2100	2100	0	ASS
O-16	2000	2100	2100	0	PD ENTRY
O-17	2000	2100	2100	0	CONCOURSE LVL NORTH ENTRY
O-18	2000	2100	2100	0	ASS
O-19	2000	2100	2100	0	PD ENTRY
O-20	2000	2100	2100	0	CONCOURSE LVL NORTH ENTRY
O-21	2000	2100	2100	0	ASS
O-22	2000	2100	2100	0	PD ENTRY
O-23	2000	2100	2100	0	CONCOURSE LVL NORTH ENTRY
O-24	2000	2100	2100	0	ASS
O-25	2000	2100	2100	0	PD ENTRY
O-26	2000	2100	2100	0	CONCOURSE LVL NORTH ENTRY
O-27	2000	2100	2100	0	ASS
O-28	2000	2100	2100	0	PD ENTRY
O-29	2000	2100	2100	0	CONCOURSE LVL NORTH ENTRY
O-30	2000	2100	2100	0	ASS
O-31	2000	2100	2100	0	PD ENTRY
O-32	2000	2100	2100	0	CONCOURSE LVL NORTH ENTRY
O-33	2000	2100	2100	0	ASS
O-34	2000	2100	2100	0	PD ENTRY
O-35	2000	2100	2100	0	CONCOURSE LVL NORTH ENTRY
O-36	2000	2100	2100	0	ASS
O-37	2000	2100	2100	0	PD ENTRY
O-38	2000	2100	2100	0	CONCOURSE LVL NORTH ENTRY
O-39	2000	2100	2100	0	ASS
O-40	2000	2100	2100	0	PD ENTRY
O-41	2000	2100	2100	0	CONCOURSE LVL NORTH ENTRY
O-42	2000	2100	2100	0	ASS
O-43	2000	2100	2100	0	PD ENTRY
O-44	2000	2100	2100	0	CONCOURSE LVL NORTH ENTRY
O-45	2000	2100	2100	0	ASS
O-46	2000	2100	2100	0	PD ENTRY
O-47	2000	2100	2100	0	CONCOURSE LVL NORTH ENTRY
O-48	2000	2100	2100	0	ASS
O-49	2000	2100	2100	0	PD ENTRY
O-50	2000	2100	2100	0	CONCOURSE LVL NORTH ENTRY
O-51	2000	2100	2100	0	ASS
O-52	2000	2100	2100	0	PD ENTRY
O-53	2000	2100	2100	0	CONCOURSE LVL NORTH ENTRY
O-54	2000	2100	2100	0	ASS
O-55	2000	2100	2100	0	PD ENTRY
O-56	2000	2100	2100	0	CONCOURSE LVL NORTH ENTRY
O-57	2000	2100	2100	0	ASS
O-58	2000	2100	2100	0	PD ENTRY
O-59	2000	2100	2100	0	CONCOURSE LVL NORTH ENTRY
O-60	2000	2100	2100	0	ASS
O-61	2000	2100	2100	0	PD ENTRY
O-62	2000	2100	2100	0	CONCOURSE LVL NORTH ENTRY
O-63	2000	2100	2100	0	ASS
O-64	2000	2100	2100	0	PD ENTRY
O-65	2000	2100	2100	0	CONCOURSE LVL NORTH ENTRY
O-66	2000	2100	2100	0	ASS
O-67	2000	2100	2100	0	PD ENTRY
O-68	2000	2100	2100	0	CONCOURSE LVL NORTH ENTRY
O-69	2000	2100	2100	0	ASS
O-70	2000	2100	2100	0	PD ENTRY
O-71	2000	2100	2100	0	CONCOURSE LVL NORTH ENTRY
O-72	2000	2100	2100	0	ASS
O-73	2000	2100	2100	0	PD ENTRY
O-74	2000	2100	2100	0	CONCOURSE LVL NORTH ENTRY
O-75	2000	2100	2100	0	ASS
O-76	2000	2100	2100	0	PD ENTRY
O-77	2000	2100	2100	0	CONCOURSE LVL NORTH ENTRY
O-78	2000	2100	2100	0	ASS
O-79	2000	2100	2100	0	PD ENTRY
O-80	2000	2100	2100	0	CONCOURSE LVL NORTH ENTRY
O-81	2000	2100	2100	0	ASS
O-82	2000	2100	2100	0	PD ENTRY
O-83	2000	2100	2100	0	CONCOURSE LVL NORTH ENTRY
O-84	2000	2100	2100	0	ASS
O-85	2000	2100	2100	0	PD ENTRY
O-86	2000	2100	2100	0	CONCOURSE LVL NORTH ENTRY
O-87	2000	2100	2100	0	ASS
O-88	2000	2100	2100	0	PD ENTRY
O-89	2000	2100	2100	0	CONCOURSE LVL NORTH ENTRY
O-90	2000	2100	2100	0	ASS
O-91	2000	2100	2100	0	PD ENTRY
O-92	2000	2100	2100	0	CONCOURSE LVL NORTH ENTRY
O-93	2000	2100	2100	0	ASS
O-94	2000	2100	2100	0	PD ENTRY
O-95	2000	2100	2100	0	CONCOURSE LVL NORTH ENTRY
O-96	2000	2100	2100	0	ASS
O-97	2000	2100	2100	0	PD ENTRY
O-98	2000	2100	2100	0	CONCOURSE LVL NORTH ENTRY
O-99	2000	2100	2100	0	ASS
O-100	2000	2100	2100	0	PD ENTRY

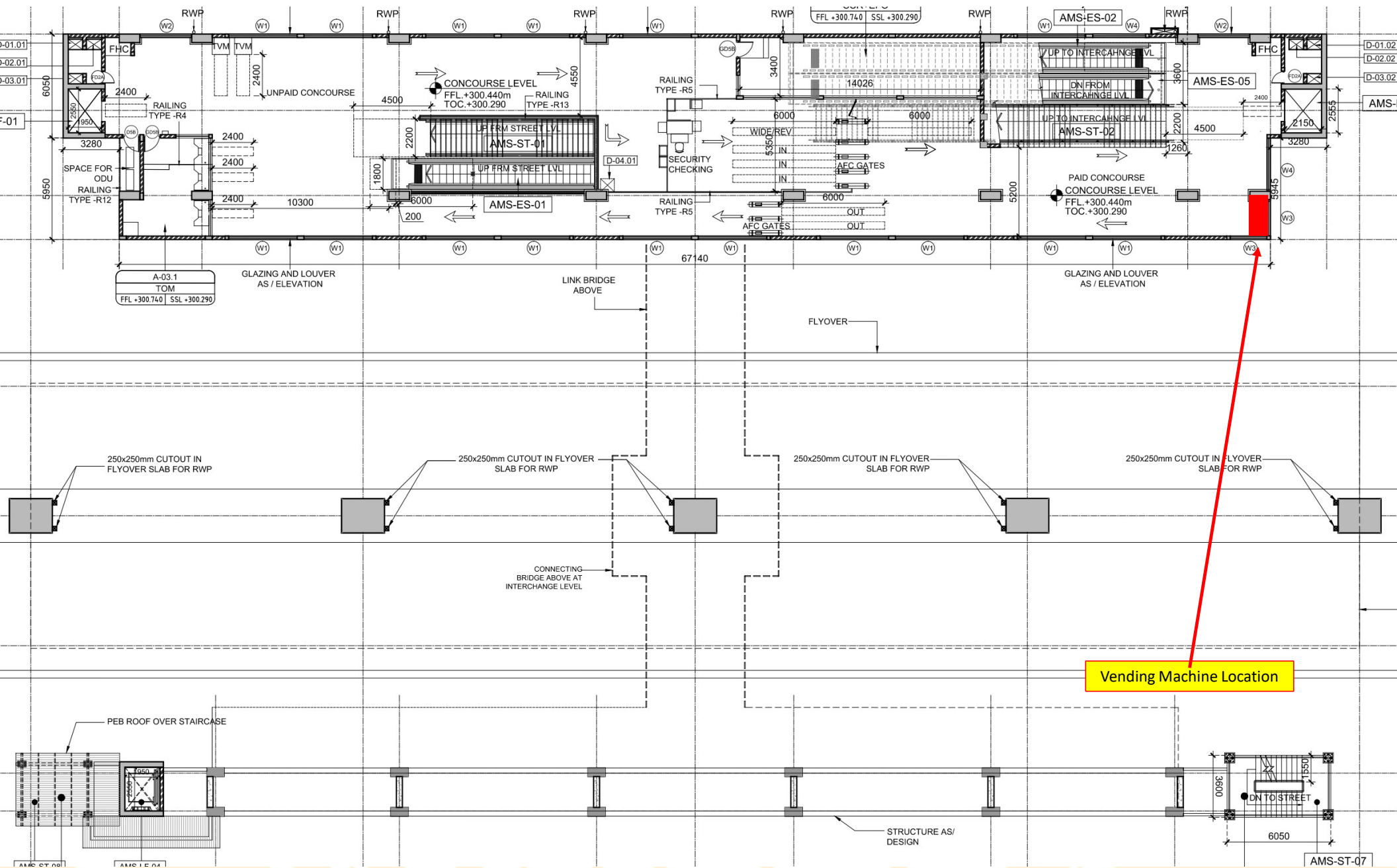
LEGEND FOR WALL AND SLAB
200MM BLOCK WALL
100MM BLOCK WALL
RCC
(UWP) - UPPER WORKING POINT
(LWP) - LOWER WORKING POINT

FINISHES
F - FLOOR
W - WALL
C - CEILING
REF DWG:

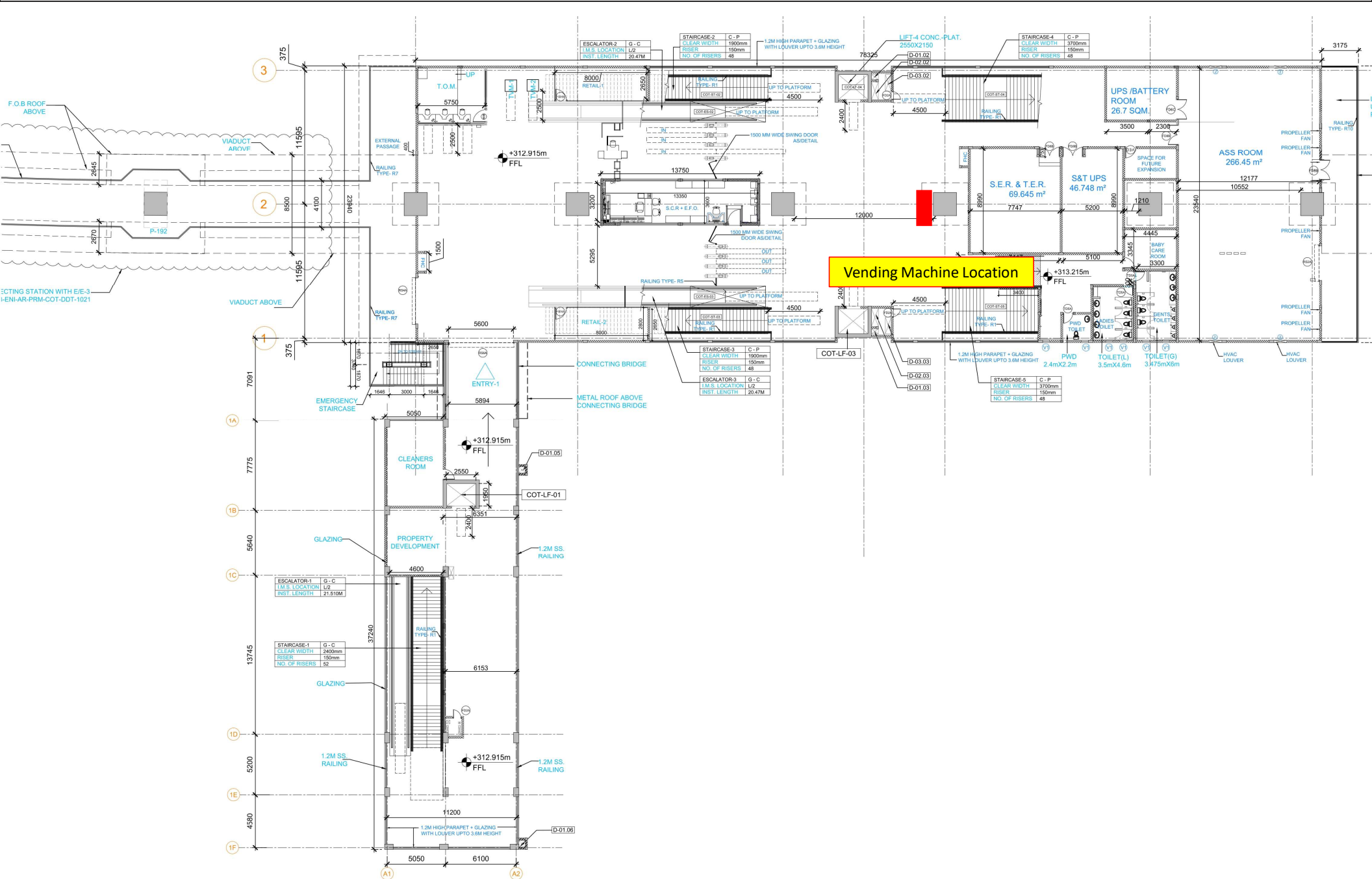


Vending Machine Location

AUTOMOTIVE SQUARE METRO STATION @ CONCOURSE LEVEL

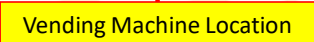


COTTON MARKET METRO STATION @ CONCOURSE LEVEL

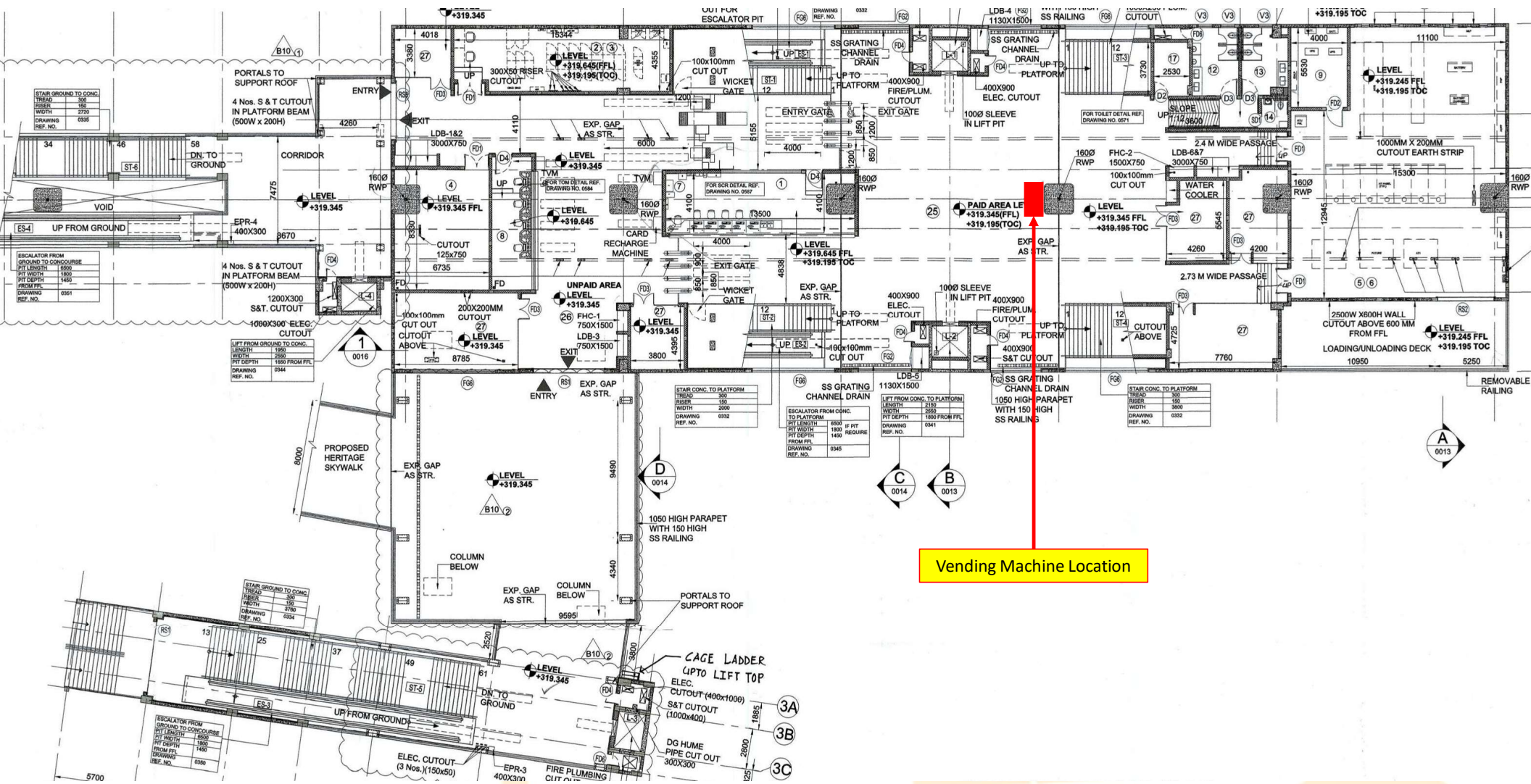


Vending Machine Location

9



DHARAMPETH COLLEGE METRO STATION @ CONCOURSE LEVEL



METRO STATION
PLATFORM START
CH:3125.37



Vending Machine Location